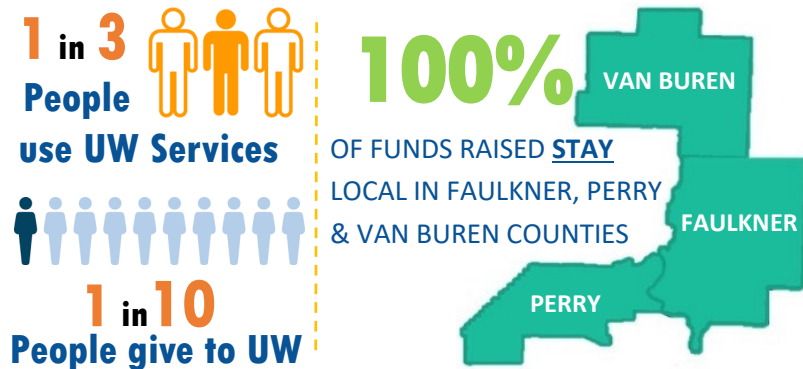


**33 PROGRAMS 23 AGENCIES**



## WHAT MATTERS MORE?

- A \$1 CAN DRINK OR FEEDING 1 CHILD LIVING IN POVERTY
- A \$3 ICE CREAM CONE OR TRANSPORTATION TO A SAFE PLACE FOR CHILDREN TO LEARN AND GROW
- A \$5 CUP OF COFFEE OR 2 MONTHS OF BOOKS FOR A CHILD IN NEED
- A \$10 MOVIE TICKET OR 10 DAYS OF CARE FOR A CHILD WITH
- A \$15 PIZZA OR MILK, EGGS, FRESH VEGGIES AND FOOD TO FEED A FAMILY OF 4 FOR 1 WEEK
- A \$25 SHIRT OR LIFE SAVING COUNSELING SERVICES TO A CHILD FOR 12 WEEKS

**Your weekly contribution will add up to big wins for your local community!**

# 2018-2019 FUNDED AGENCY PROGRAMS

## EDUCATION

- Imagination Library
- Arkansas Preschool Plus**
- Arkansas Single Parent Scholarship Fund
- Arkansas Single Parent Scholarship Fund**
- Step by Step Learning Center
- Center for Exceptional Children**
- Resource Center & Lending Library
- Childcare Aware**
- Autism Resource Center
- Community Connections**
- Adolescent Parent Mentoring
- Conway Cradle Care**
- Early Childhood Education
- Conway Cradle Care**
- Girl Scouting
- Faulkner County Juvenile Court**
- Early Childhood Services
- Milestones Services, Inc.**
- Outreach Initiatives
- Ozark Opportunities**
- Bridges Out of Poverty
- Salvation Army**
- Van Buren County Fair
- Van Buren County Livestock Show & Fair Association**

GOALS (Girls Overcoming Adversity in Living Supported)

**Van Buren County Juvenile Court**

Stuff the Bus

**United Way of Central Arkansas**

## HEALTH

- Community Outreach
- Bethlehem House**
- Emergency Food
- CAPCA**
- CASA
- Children's Advocacy Alliance**
- Children's Advocacy Center
- Children's Advocacy Alliance**
- Youth Mental Health
- Community Service**
- ACTs Jr.
- Community Connections**
- Congregate Meals
- Faulkner County Council on Aging**
- Health & Wellness Activities
- Faulkner County Council on Aging**
- Home Delivered Meals
- Faulkner County Council on Aging**
- Home Delivered Meals
- Perry County Senior Center**

- Senior Congregate Meals
- Van Buren County Aging Program**
- Emergency Fund
- White River Area Agency on Aging**
- Women's Shelter
- Women's Shelter**
- Day of Caring
- United Way of Central Arkansas**

## FINANCIAL STABILITY

- Transitional Housing
- Bethlehem House**
- Transportation
- Boys & Girls Club of Faulkner County**
- Emergency Shelter
- CAPCA**
- Charity Tacker
- United Way of Central Arkansas**
- VITA—Free Tax Preparation
- United Way of Central Arkansas**



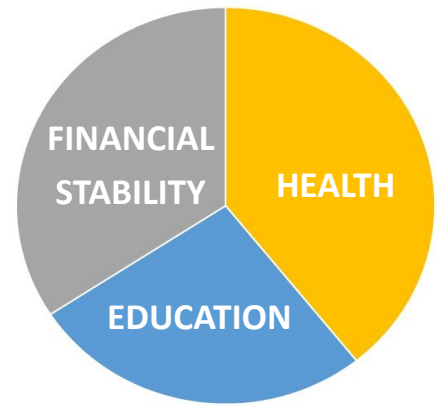
## UNITED WAY PROGRAMS

- CHARITY TRACKER:** United Way administers this program to over 130 non-profits, schools, churches and government agencies to keep track of resources given to our community and also take care of needs that may fall between the cracks.
- DAY OF CARING:** United Way recruits volunteers and organizes local service projects within our local non-profits, schools and city organizations.
- STUFF THE BUS:** United Way raises school supplies & toiletry items for children within the local school districts in Faulkner, Perry & Van Buren counties.
- VITA—FREE TAX PREP:** United Way offers Free Tax Preparation for households that are income eligible.

## UNITED WAY COLLABORATIONS

- EFSP:** The Emergency Food & Shelter Program (Phase 35) is providing a \$39,000 grant that is administered by the United Way of Central Arkansas in which local non-profits will be the recipients.
- HOMELESS TASKFORCE:** United Way collaborates with many local agencies and the local government to strategize new ideas for our homeless population.
- PROFESSIONAL DEVELOPMENT:** UCA & United Way partner to provide professional development workshops to all local non-profit organizations.
- WOMEN UNITED CAREER CLOSET:** United Way is partnering with Salvation Army, Women's Shelter, Y107 & CBC to provide business clothes for Women that are interviewing for jobs or needing clothes for their current jobs. You must be referred by an agency.

## WHERE YOUR MONEY GOES



**HEALTH:** 39.25% of UWCA funds benefit the community's access to health care.



**EDUCATION:** 26.54% of UWCA funds contribute to the success of children, youth and adults through education.



**FINANCIAL STABILITY:** 34.21% of UWCA funds benefit the community by promoting financial stability.

## 2018 FOUNDATION PARTNERS

### LEGACY



### GOLD



### SILVER



# UNITED WE FIGHT. UNITED WE WIN.

**UNITED WAY FIGHTS  
FOR THE HEALTH,  
EDUCATION &  
FINANCIAL STABILITY  
OF EVERY PERSON  
IN EVERY COMMUNITY.**

# LIVE UNITED.



## WHAT IS UNITED WAY?

We are a local nonprofit organization that brings our community together and focuses resources on the critical human care needs in the area. By partnering with government, businesses, nonprofits and individuals we are able to monitor the needs of our community and respond quickly as issues and opportunities arise. As a convener, collaborator, monetary provider and leader in addressing health and human service issues, United Way of Central Arkansas fulfills a unique role in making our community a better place.

## HOW CAN YOU LIVE UNITED?

**GIVE.** Giving to United Way influences the condition of Faulkner, Perry & Van Buren Counties. United Way is the collective power of all working together. To set up your gift today, visit [www.uwcark.org/donate](http://www.uwcark.org/donate)

**ADVOCATE.** Champion a cause. Make your voice heard. Learn the issues that are important. Join together and help create lasting solutions. If you are interested in becoming an advocate for United Way, call 501.327.5087

**VOLUNTEER.** Lend your muscle. Contribute your brainpower. We ALL have something to offer. Everybody wins when we all pitch in to advance the common good. To check out volunteer opportunities, visit [www.uwcark.org/volunteer](http://www.uwcark.org/volunteer)

# WHO WILL YOU FIGHT FOR?